

2501 SERIES

■ Wire to Board System
pitch 2.5mm(.098")

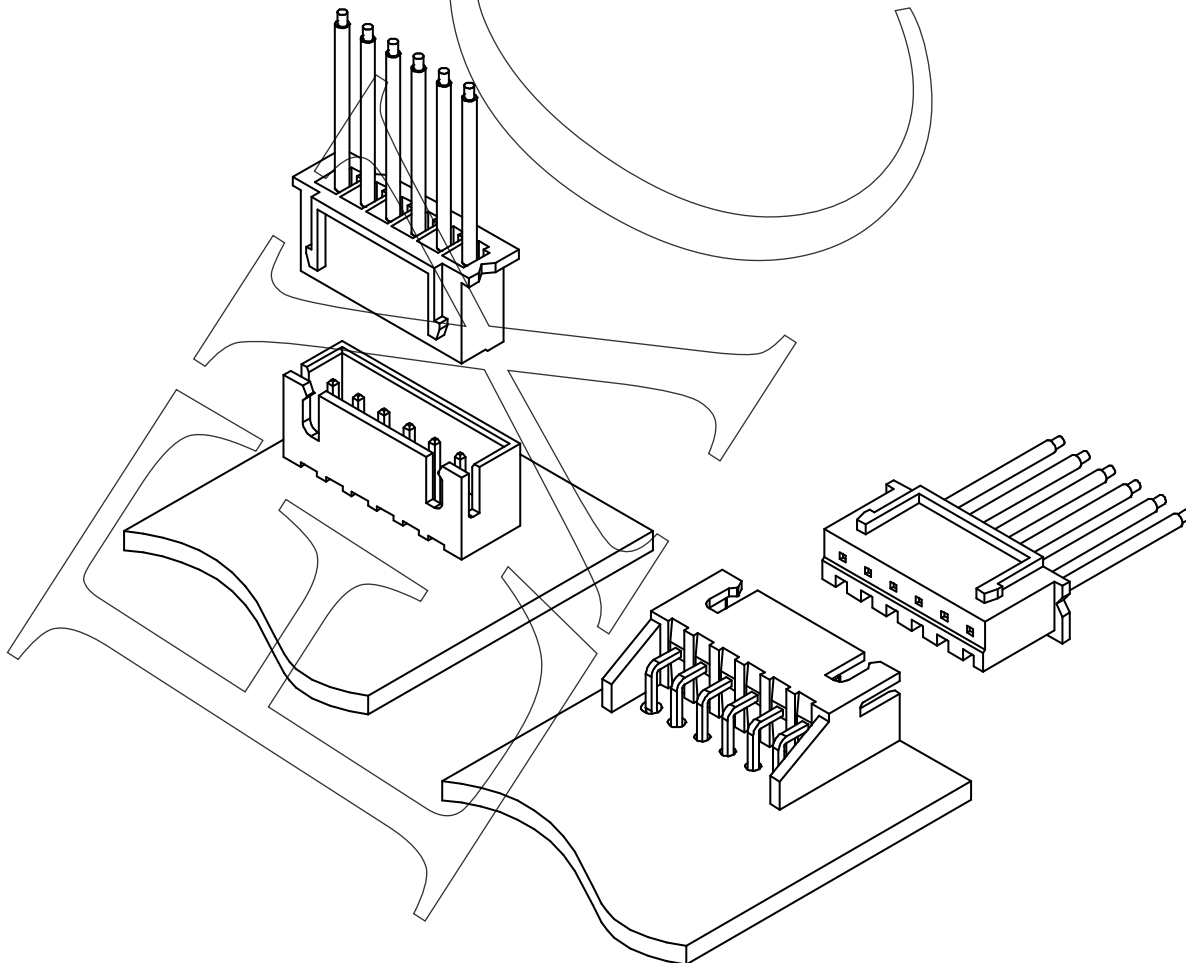
■ Specifications

1. Current rating: 3A AC/DC
2. Voltage rating: 250V AC/DC
3. Withstand voltage: 1000V AC/minute
4. Insulation resistance: 1000M ohm min
5. Contact resistance: 10m ohm max
6. Temperature range: -25°C to +85°C

7. Applicable PC board thickness:
1.0~1.6mm(.039"to .063")

8. Applicable wires: AWG#28-#22
Insulation O.D.: 1.2-1.9mm

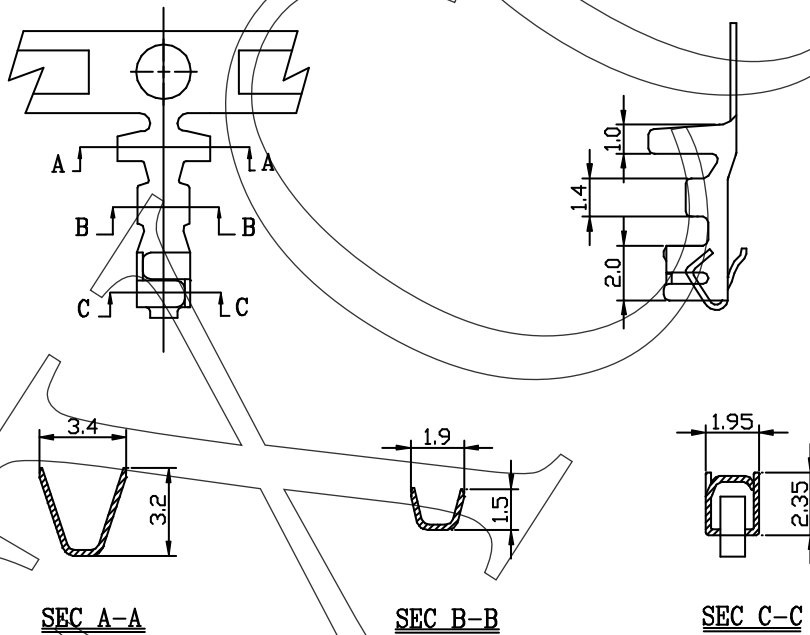
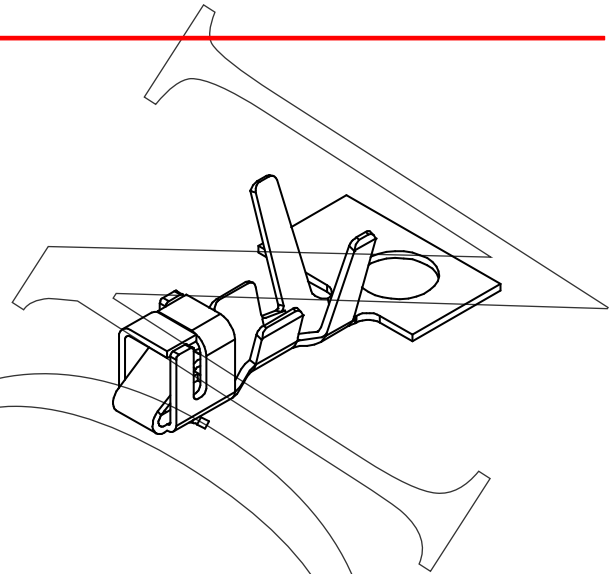
9. Circuits: 2~16 circuits available



2501 SERIES

Crimp Terminal

1. Part No.: 250100TC351, 250100TC051
2. Part Name: 2501 Terminal
3. Material: Phosphor or Brass bronze
4. Finishing: Tin Pre-plated



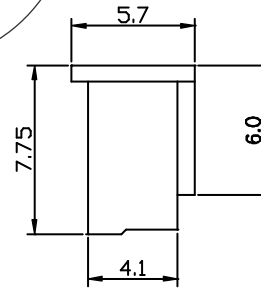
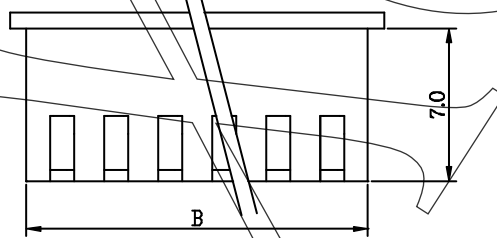
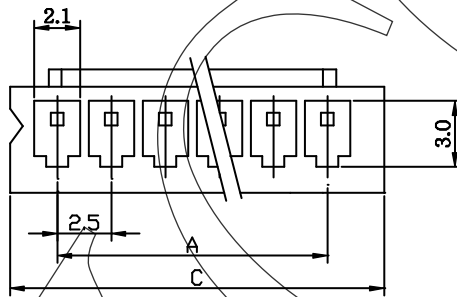
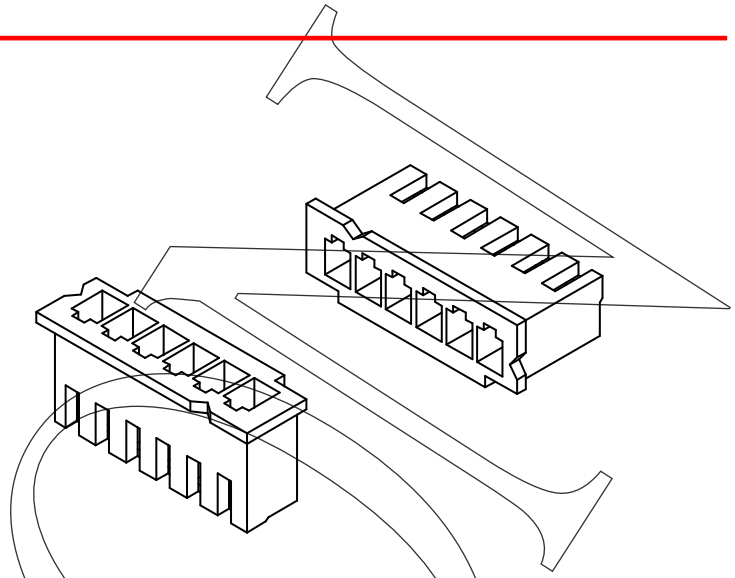
Ordering Information and Dimensions:

Part No.	Wire Range	Insulation O.D.	Material	Finishing	Q'ty/reel
250100TC351	AWG#28~#22	1.2-1.9mm	Phosphor	Tin pre-plated	7,000pcs
250100TC051			Brass		

2501 SERIES

Housing

1. Part No.: 2501xxHA001
2. Part Name: 2501 Housing
3. Material: Nylon 66 UL 94V0
4. Color: Natural



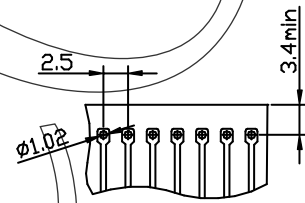
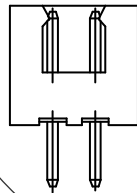
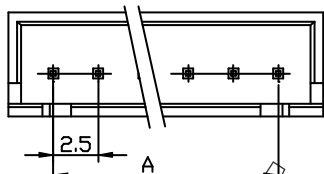
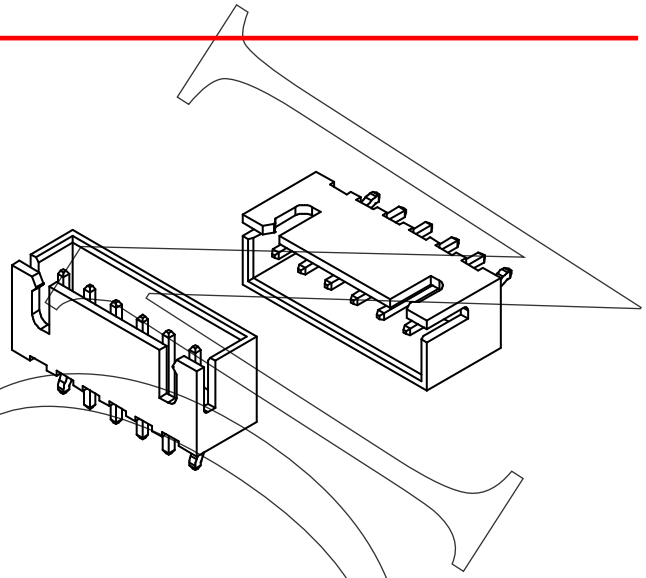
Ordering Information and Dimensions:

Part No.	Circuits	Dim A	Dim B	Dim C	Part No.	Circuits	Dim A	Dim B	Dim C
250102HA001	2	2.5	5.7	7.3	250110HA001	10	22.5	25.7	27.3
250103HA001	3	5.0	8.2	9.8	250111HA001	11	25.0	28.2	29.8
250104HA001	4	7.5	10.7	12.3	250112HA001	12	27.5	30.7	32.3
250105HA001	5	10.0	13.2	14.8	250113HA001	13	30.0	33.2	34.8
250106HA001	6	12.5	15.7	17.3	250114HA001	14	32.5	35.7	37.3
250107HA001	7	15.0	18.2	19.8	250115HA001	15	35.0	38.2	39.8
250108HA001	8	17.5	20.7	22.3	250116HA001	16	37.5	40.7	42.3
250109HA001	9	20.0	23.2	24.8					

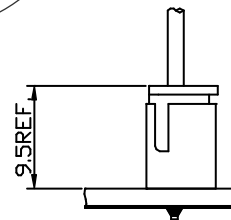
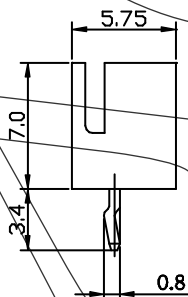
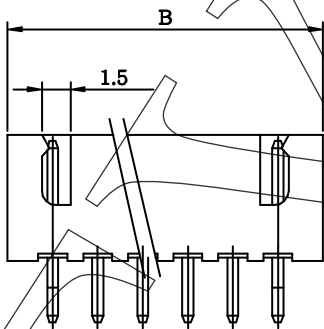
2501 SERIES

Wafer (Vertical type)

1. Part No.: 2501xxWV001
2. Part Name: 2501 Wafer
3. Material: Nylon 66 UL 94V0
Pin: Brass bronze, Tin plated
5. Color: Natural



RECOMMENDED PCB LAYOUT
(PCB T=1.0~1.6mm)



Mating Dimensions

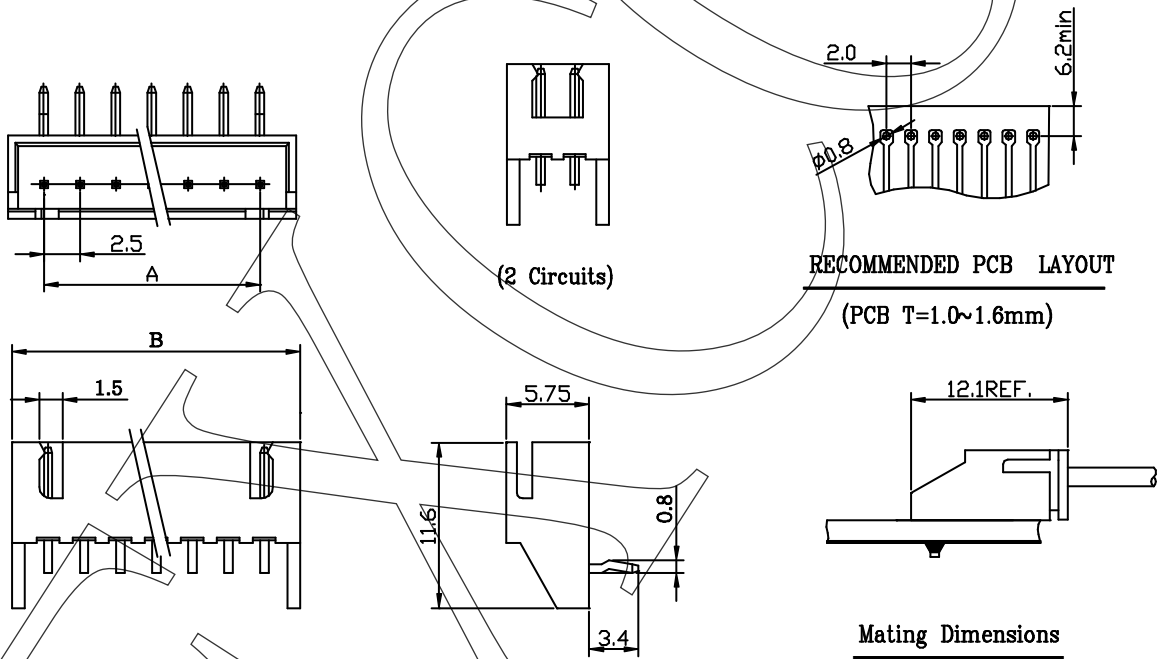
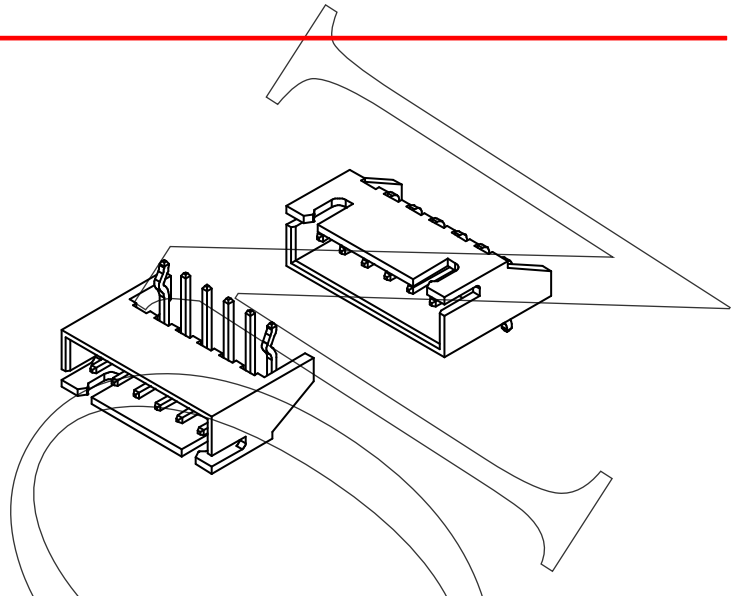
Ordering Information and Dimensions:

Part No.	Circuits	Dim A	Dim B	Part No.	Circuits	Dim A	Dim B
250102WV001	2	2.5	7.5	250110WV001	10	22.5	27.5
250103WV001	3	5.0	10.0	250111WV001	11	25.0	30.0
250104WV001	4	7.5	12.5	250112WV001	12	27.5	32.5
250105WV001	5	10.0	15.0	250113WV001	13	30.0	35.0
250106WV001	6	12.5	17.5	250114WV001	14	32.5	37.5
250107WV001	7	15.0	20.0	250115WV001	15	35.0	40.0
250108WV001	8	17.5	22.5	250116WV001	16	37.5	42.5
250109WV001	9	20.0	25.0				

2501 SERIES

Wafer (Right angle type)

1. Part No.: 2501xxWR001
2. Part Name: 2501 Wafer
3. Material: Nylon 66 UL 94V0
Pin: Brass bronze, Tin plated
4. Color: Natural



Ordering Information and Dimensions:

Part No.	Circuits	Dim A	Dim B	Part No.	Circuits	Dim A	Dim B
250102WR001	2	2.5	7.5	250110WR001	10	22.5	27.5
250103WR001	3	5.0	10.0	250111WR001	11	25.0	30.0
250104WR001	4	7.5	12.5	250112WR001	12	27.5	32.5
250105WR001	5	10.0	15.0	250113WR001	13	30.0	35.0
250106WR001	6	12.5	17.5	250114WR001	14	32.5	37.5
250107WR001	7	15.0	20.0	250115WR001	15	35.0	40.0
250108WR001	8	17.5	22.5	250116WR001	16	37.5	42.5
250109WR001	9	20.0	25.0				